



Bryan Avila ***
Florida House of
Representatives
Hialeah



Gordon Bailey *
Florida Blue
Jacksonville



David Bevirt *
Strategic Property
Partners, LLC
Tampa



Jay Beyroui ***
Monicarla, L.T.D.
Seminole



Maribeth Bisiener *
Walt Disney Parks &
Resorts, U.S.
Lake Buena Vista



Jesse Biter ***
Biter Enterprises, LLC.
Sarasota



Holly Borgmann *
ADT US Holdings, Inc.
Boca Raton



Paul F. Browning *
Mitsubishi Power
Lake Mary



Dominic Calabro ***
Florida Tax Watch
Tallahassee



Dean Cannon ***
GrayRobinson, P.A.
Tallahassee



Gregory Celestan ***
Celestar Corporation
Tampa



Richard Corcoran ***
Florida Department of
Education
Tallahassee



Marshall Criser, III **
Florida Board of Governors
Foundation, Inc.
Tallahassee



Brian Curtin *
BRPH
Architects-Engineers, Inc.
Melbourne



Daniel Davis ***
JAX Chamber
Jacksonville



Ron DeSantis ***
State of Florida Governor's
Office
Tallahassee



Sonya Deen Hartley ***
J.M. Family Enterprises
Fort Lauderdale



David Denor *
Florida Trend
St. Petersburg



Kevin Doyle ***
CareerSource Florida
Jacksonville



Barbara Essenwine ***
The Above & Beyond
Group
Palm City



Tom Feeney **
Associated Industries of
Florida
Tallahassee



Nicole Fried ***
Florida Department of
Agriculture & Consumer
Services
Tallahassee



Danny Gaekwad *
NDS USA
Ocala



Leo Govoni *
Boston Holding Company
LLC
Clearwater



Margy Grant *
Florida Realtors
Orlando



Jeff Hendry **
North Florida Economic
Development Partnership
Tallahassee



Marc Hoenstine CECD ***
Florida Economic
Development Council
Winter Garden



Mori Hosseini ***
ICI Homes
Daytona Beach



Marva Johnson *
Charter Communications
Maitland



Kenneth Kahn ***
LRP Publications, Inc.
Palm Beach Gardens



Belinda Keiser ***
Keiser University
Fort Lauderdale



Secretary Laurel Lee ***
Florida Department of State
Tallahassee



Kelly Madden *
Wells Fargo Bank, N.A.
Jacksonville



David H. Melvin *
Melvin Engineering
Marianna



Nick Miceli *
TD Bank
Fort Lauderdale



Ashley Moody ***
Florida Office of the
Attorney General
Tallahassee



Melanie Parrish Bonanno *
Publix Super Markets, Inc.
Lakeland



Jimmy Patronis ***
Florida Department of
Financial Services
Tallahassee



Thomas Pennekamp *
Truist Financial
Tallahassee



Winfred Phillips **
University of Florida
Gainesville



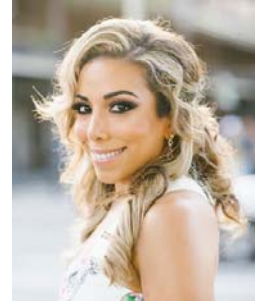
Cary Putrino *
Fifth Third Bank
Tampa



Bob Ritchie *
American Integrity
Insurance
Tampa



Gary Rosen *
Becker & Poliakoff, P.A.
Ft Lauderdale



Katherine San Pedro ***
Ballard Partners
Coral Gables



Gene Schaefer *
Bank of America, N.A.
Miami



Jeffrey Senese, Ph.D. *
Saint Leo University
Saint Leo



Eric Silagy *
Florida Power & Light
Company
Juno Beach



Gary Spulak *
Embraer Aircraft Holding,
Inc.
Ft. Lauderdale



Kelli Stargel ***
Florida Senate
Lakeland



Catherine Stempien *
Duke Energy
St. Petersburg



Nancy Tower *
TECO Energy
Tampa



S. Reeves Valentine *
Lockheed Martin Training
and Logistics Solutions
Orlando



Dan Velazquez *
The St. Joe Company
WaterSound



Bob Ward ***
Florida Council of 100
Tampa



Andy Wike *
Fleetwing Corporation
Lakeland



Mark Wilson **
Florida Chamber Of
Commerce
Tallahassee



Joe York *
AT&T
Jacksonville